

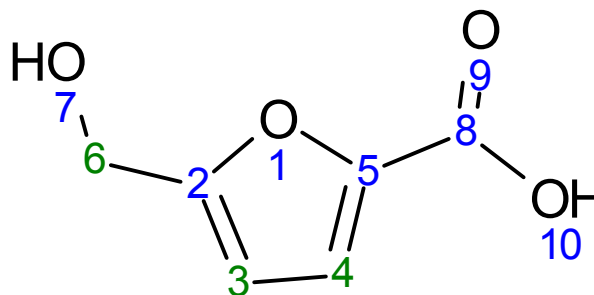
Sumiki's acid

HMDB02432

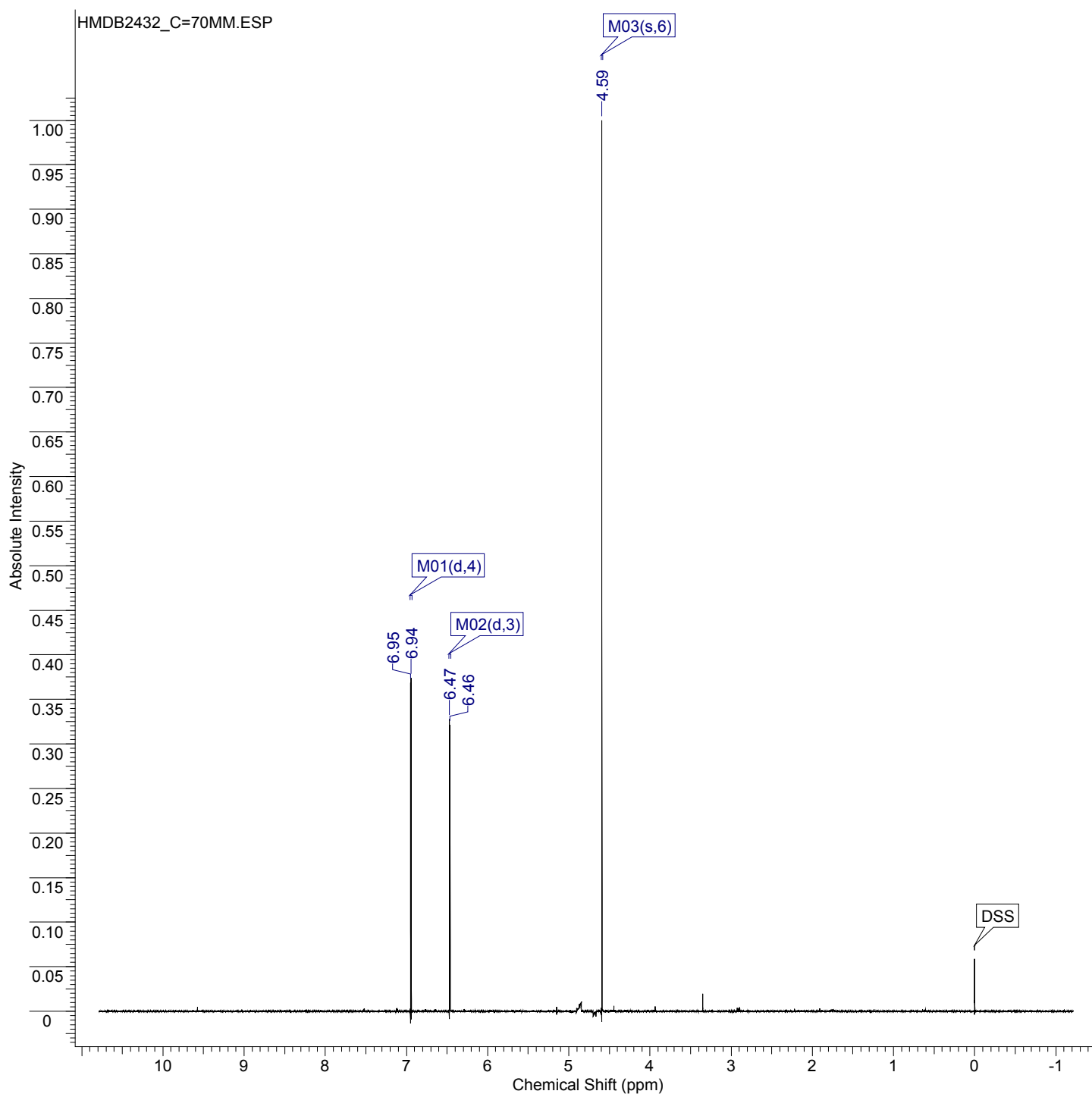
^1H NMR Spectrum: 500MHz in H_2O

Sample: ~70mM in H_2O and pH 7.00

Referenced to DSS



Full ^1H NMR Spectrum



Sumiki's acid

HMDB02432

¹H NMR Spectrum: 500MHz in H₂O

Sample: ~70mM in H₂O and pH 7.00

Referenced to DSS

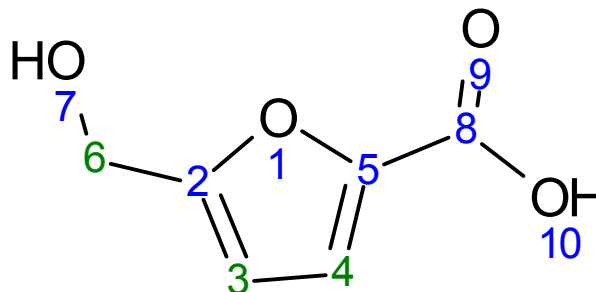


Table of Peaks

No.	(ppm)	(Hz)	Height
1	4.59	2295.3	1.0000
2	6.46	3230.4	0.3213
3	6.47	3233.8	0.3280
4	6.94	3469.9	0.3738
5	6.95	3473.3	0.3688

Table of Assignments

No.	Atom	Exp. Shift (ppm)	Multiplet
1	6	4.59	M03
2	3	6.47	M02
3	4	6.95	M01

Table of Multiplets

No.	Shift1 (ppm)	H's	Type	J (Hz)	Atom1	Multiplet1	(ppm)
1	6.47	24	d	3.39	3	M02	[6.45 .. 6.48]
2	6.95	25	d	3.39	4	M01	[6.93 .. 6.96]
3	4.59	44	s	-	6	M03	[4.58 .. 4.60]

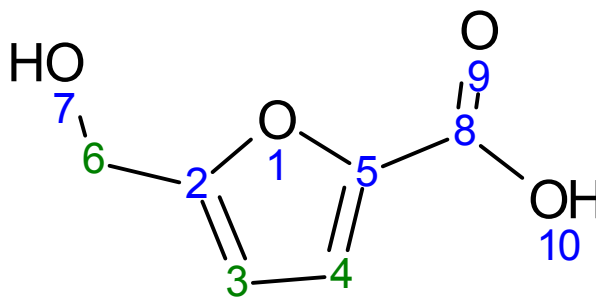
Sumiki's acid

HMDB02432

^1H NMR Spectrum: 500MHz in H_2O

Sample: ~70mM in H_2O and pH 7.00

Referenced to DSS



Zoomed ^1H NMR Spectrum

